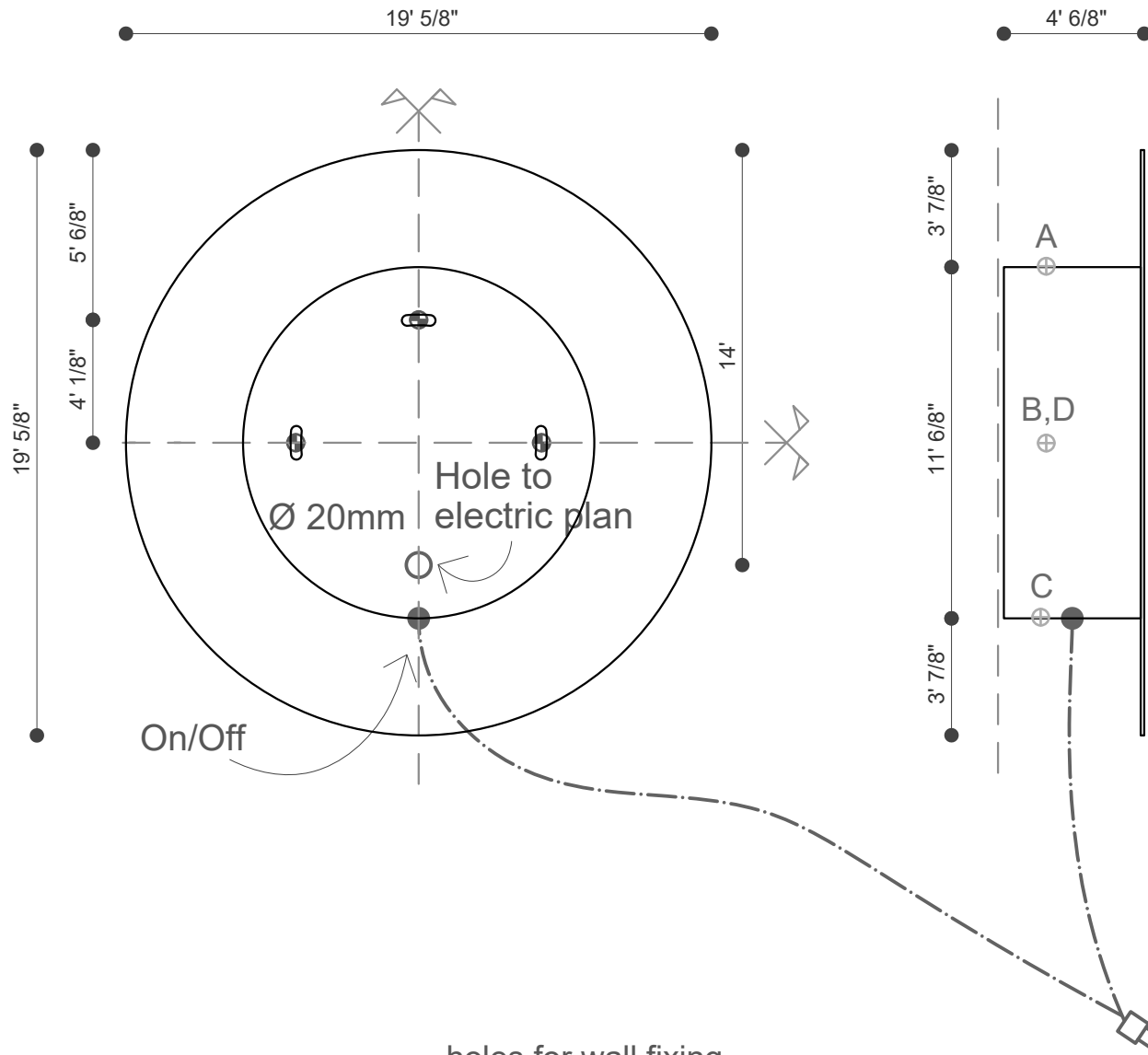


Before installing view CEI standards on our website.

Note: Protection against electric shock available (earthing and bonding)

The installation should be done by an electrician.

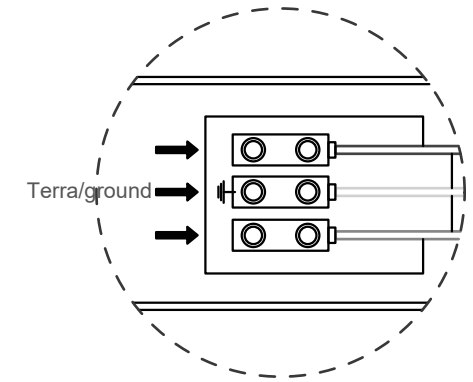


- holes for wall fixing
- fasteners should be secured in studs or headers places behind the unit

(optional)
spina
plug-in

Instructions:

1. Unscrew screws A,B,C,D. Right and left. ⊕
2. Secure the body of the Towel warmer on the wall.
3. Do the electrical connection described below.



4. Replace the front cover.