



copyright© - MonicaGeronimi

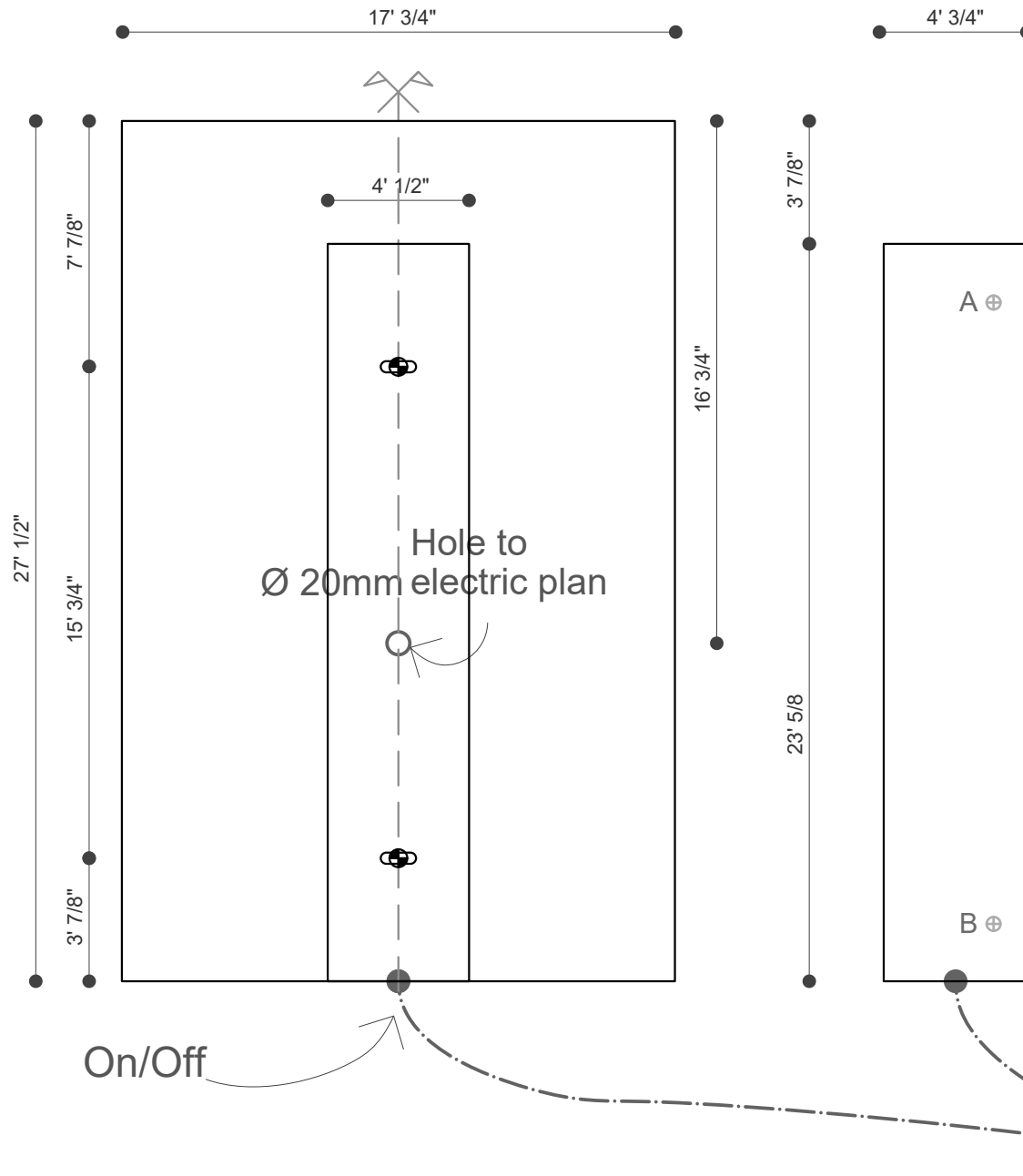
mg12 S.r.l.  
viale R.Margherita, 33  
20122 Milano  
tel. 0233605330

# i geometrici / i gioielli / mirror / rectangle

Before installing view CEI standards on our website.

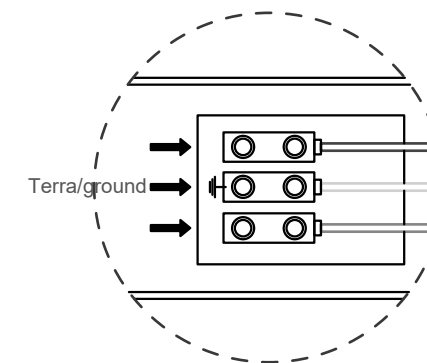
Note: Protection against electric shock available (earthing and bonding)

The installation should be done by an electrician.



## Instructions:

1. Unscrew screws A,B.  
Right and left. ⊕
2. Secure the body of the Towel warmer on the wall.
3. Do the electrical connection described below.



4. Replace the front cover.

● holes for wall fixing  
● fasteners should be secured in studs or headers places behind the unit

(optional)  
spina  
plug-in

\*all dimentiones are expressed in inches.