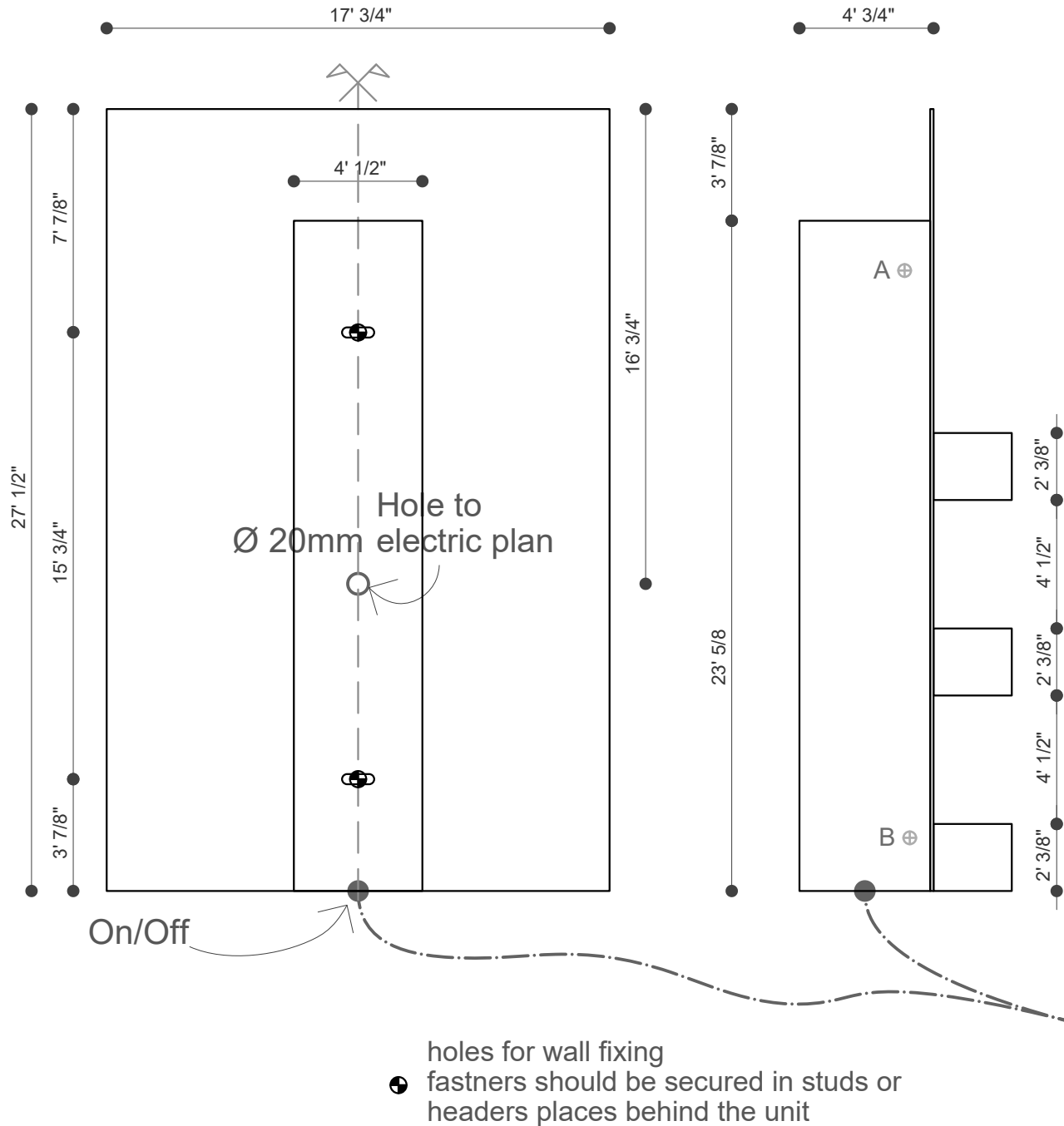


Before installing view CEI standards on our website.

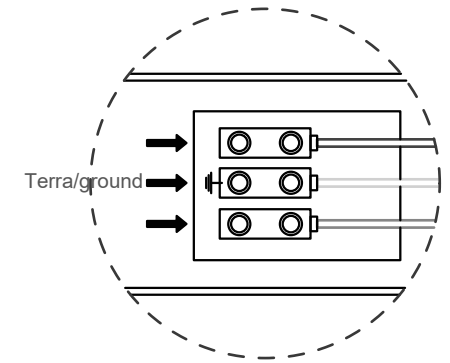
Note: Protection against electric shock available (earthing and bonding)

The installation should be done by an electrician.



Instructions:

1. Unscrew screws A,B.
Right and left. ⊕
2. Secure the body of the
Towel warmer on the wall.
3. Do the electrical connection
described below.



4. Replace the front cover.